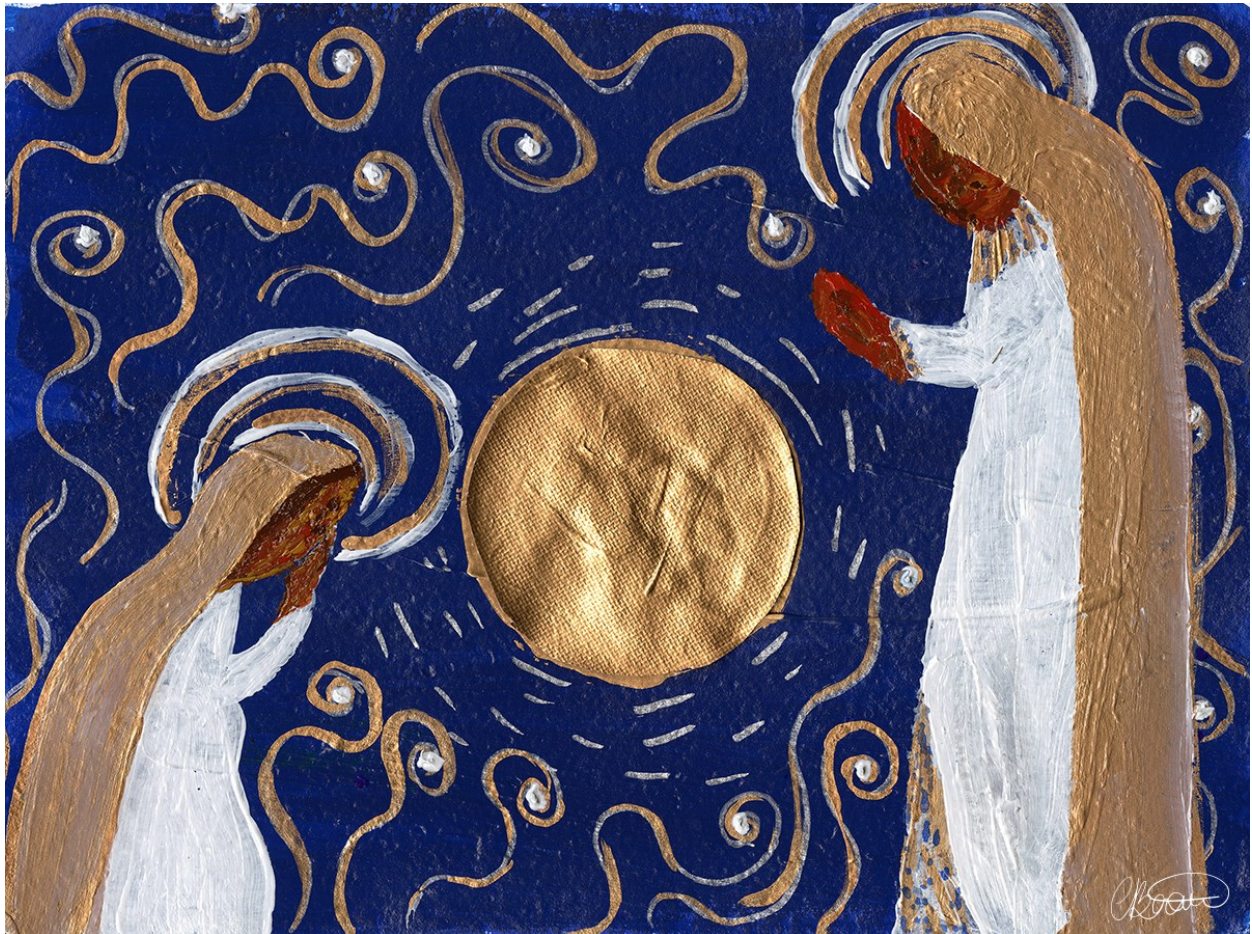




Central

PRESBYTERIAN CHURCH



Mary's Golden Annunciation by Carmelle Beaugelin

CHRISTMAS EVE **December 24, 2024 | 7:00pm**

Centered by our myriad and shared spiritual journeys toward God, we strengthen each other to practice love in action with hand and heart. We strive to be a nurturing center dedicated to demonstrating God's love to one another, our community and the world.

Welcome to Central Presbyterian Church, a community where you belong. Whether you're with us for the first or thousandth time, whether you're in doubt or are devout, no matter who you are, what experience you bring, or what questions you have, you are welcome here. God welcomes us all.

Hearing assistance devices are available from the sound booth.

Bold signifies congregation participation.

WORSHIP ON CHRISTMAS EVE

Fear Not! Good News and Great Joy!

Prelude

Bell Carol/In Dulci Jubilo trad., arr. M. Naughtin

Greensleeves trad., arr. M. Naughtin

Pastorale from Christmas Concerto Arcangelo Corelli

Gute Nacht from Winterreise
Franz Schubert, arr. Danish String Quartet

Carol of the Bells Mykola Leontovych
arr. M. Naughtin

Lo, How a Rose E'er Blooming Michael Praetorius
arr. M. Naughtin

Christmas Medley trad., arr. M. Naughtin

Largo from Winter Antonio Vivaldi

Susan Paik, violin
Takanori Sugishita, violin
Kostadin Dyulgierski, viola
Charles Lee, cello

Welcome and Opening Prayer

Louise Westfall

Carol 88 (seated) vv 1, 6, 7

O Come, O Come, Emmanuel

Lighting the Christ Candle

The Hutson-Habib Family

We light these candles as a sign of the coming light of Christ. As God has promised, in days to come. . . The nations shall beat their swords into plowshares, and their spears into pruning hooks; **nation shall not lift up sword against nation, neither shall they learn war any more.** [*light purple candle*]

The wolf shall dwell with the lamb, the leopard shall lie down with the kid, **the calf and the lion and the fatling will lie down together, and a little child shall lead them.** [*light purple candle*]

The wilderness and the dry land shall be glad, the desert shall rejoice and blossom; **like the crocus it shall blossom abundantly, and rejoice with joy and singing.** [*light pink candle*]

The Lord will give you a sign. Look, the young woman is with child. **She shall bear a son, and name him Emmanuel: God is with us.** [*light purple candle*]

The people who walked in darkness have seen a great light; **those who lived in a land of deep darkness, on them light has shined.** [*light Christ candle*]

The grace of God has appeared, bringing life to all. Come people of God,

Let us walk in the light of Love.

*Carol 133 vv 1, 3, 4

O Come, All Ye Faithful

Prayer for Illumination

Gracious God, we've heard this story before — a star in the sky and a baby lying in a manger. We've heard this story before — passed down in hopeful whispers through the generations. So tonight, we ask that you make room in our souls to hear this story again. Make room in us for awe. Make room in us for wonder. Make room for heartache and compassion. Make room in our hearts . . . for you. We know you are still speaking . . . And we are listening. Amen.

First Reading

Isaiah 9:2-7

Chris Primus

A righteous ruler shall arise

Choral Anthem

Before the Marvel of this Night

Carl Schalk
The Chancel Choir
Mallory Bernstein, piano

Second Reading

Isaiah 52:7-10

Jack Westfall
Your God reigns

*Carol 121

O Little Town of Bethlehem

Third Reading

Luke 2:1-12

Liza Smith
Born in the Night

Carol 119

Hark! the Herald Angels Sing

Fourth Reading

Luke 2:13-20

Sally Leibbrandt
Peace on Earth

*Carol 113

Angels We Have Heard on High

Fifth Reading

John 1:1-9, 14

Chris Wineman
Show us your Glory

Solo

O Holy Night

Adolphe Adam
Chuck Stevenson, soloist
Mallory Bernstein, piano

Christmas Message

Fear Not! Jesus is Born in Denver

Louise Westfall

Offering

The offering tonight supports Central's ministries to vulnerable people in our downtown community. Thank you for your gifts.

Green Prayer Request Cards and Welcome Cards are located in the pew racks. Please put them and your offering in the collection plates as they are passed.

To give via sms, please text "centraldenver" (no spaces) to 73256. You will be asked to enter your credit card info. Thank you for your gifts.

Offertory: Carol 110

Love Has Come

Prayers for Peace

The Light of Christ spreads throughout the world

[Please tip only unlit candles to receive the flame, and assist each other to keep lighted candles upright.]

Carol

Silent Night

**Silent night, holy night! All is calm, all is bright
'round yon virgin mother and child!
Holy Infant, so tender and mild,
Sleep in heavenly peace, sleep in heavenly peace.**

**Silent night, holy night! Shepherds quake
at the sight;
Glories stream from heaven afar,
Heavenly hosts sing "Alleluia:
Christ the Savior is born; Christ the Savior is born!"**

**Silent night, holy night! Wondrous star,
lend thy light; with the angels let us sing
Alleluia to our King;
Christ the Savior is born; Christ the Savior is born.**



We are glad to be worshipping with you today

and hope you will explore the many opportunities for learning, serving, and community building at Central Presbyterian Church.

Free Sunday Parking | 8:00am - 1:30pm

Key Park is located across the street, with its main entrance on 16th Avenue.

Wells Fargo Center Parking Garage. You must get a parking validation ticket from an usher. When exiting garage insert your entry ticket into the exit column followed by the parking validation ticket.

Elderly and differently-abled individuals may park in the three staff parking spaces and the three handicapped parking spaces in front of the church.

Online Giving

Set up one-time or automatic giving for your offerings. www.centraldenver.com/give

Children in Worship

Central values having all generations worshipping together. All children are welcome in the worship space each and every Sunday. We enjoy and expect the joyful noises of children as they are a vibrant part of our faith community.

- Nursery Care for infants and toddlers is available from 9:30-11:45am
- Worship activity bags are available in the Narthex.

Contact Molly Brown at molly@centraldenver.com with questions or to be added to the Children, Youth and Families mailing list (weekly emails with events and more).

Join Us for Worship Online

For those who prefer to worship online or who are unable to join us in person, we continue to livestream our morning worship service at 10:30am: centraldenver.com/livestream. *Those without internet access are invited to listen to the morning service via phone by calling 1.339.207.6673 at the time of the service.*

Weekly Email Newsletter

The best way to stay informed about activities at Central is to subscribe to our weekly e-newsletter, which goes out every Thursday at 6:30 pm. Sign up at: www.centraldenver.com/contact

The deadline for copy for the bulletin and the eVoice is 10am on Tuesday morning. Any submissions after this deadline will be featured in the following week's publication.

Ways to Connect



Serendipity Women's Group

Serendipity, an informal group for all women, resumes monthly meetings in the New Year. Anne Bond hosts at her home January 11, 1:30-3:30. We meet on second Thursdays, January through April at 1:30 and May through November at 6:30.

Men's Night Out

Gather in participants' homes for conversation, food and drink, with Central men of all ages. Please contact Larry Armstrong 303.875.7808 or Larry@larrydarmstrong.com for more information.

Theology on Tap Thursdays, 7:00pm

We get together at local breweries to enjoy fellowship and discuss questions of faith. Please contact Pastor Louise to be added to the email list for locations.

Central Connections

Gatherings for couples and singles primarily in their 20's and 30's seeking connections in the city. Contact Pastor Louise to be added to the email list.

Women's Bible Study 2nd Thursdays, 10:00am Via Zoom

All women are welcome. Please visit centraldenver.com for access to the Zoom Link.

Staff Directory

Pastor, Louise Westfall

louise@centraldenver.com | 303.567.6281

Director of Mission & Faith Formation, Molly Brown

molly@centraldenver.com | 303.567.6285

Music Director & Church Administrator, Charis Smith

charis@centraldenver.com | 303.567.6283

Facilities Manager, Jon Dreux

jon@centraldenver.com

Concert Manager, Glenn Ross

concerts@centraldenver.com

Digital Production Manager, Aaron Black